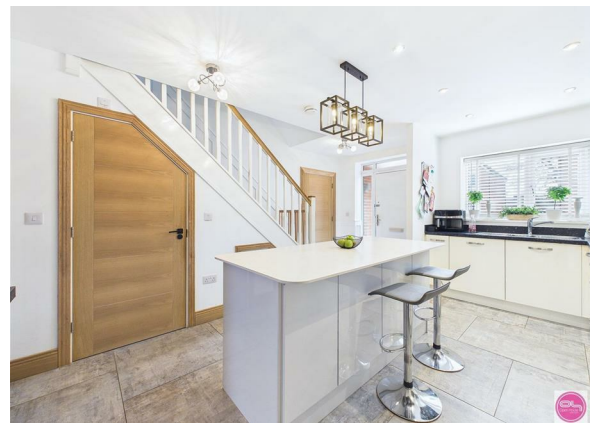
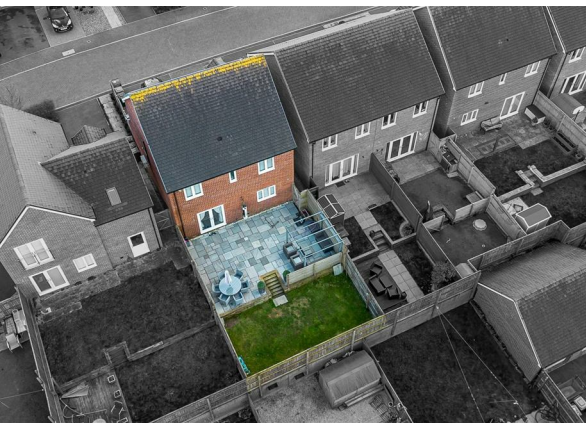


Lamplight Way, Castle Gresley, Swadlincote, DE11 9HA

£325,000

Council Tax Band: D



Located on the popular Manorfields development in Castle Gresley, this modern four-bedroom detached home offers stylish, spacious accommodation ideal for family living. Beautifully presented throughout, the property has been thoughtfully enhanced to create a superb breakfast kitchen, a generous living room with garden access, and four well-proportioned bedrooms including a principal bedroom with en-suite.

The property is well placed for access to Swadlincote, Burton upon Trent, Ashby-de-la-Zouch, Tamworth and the M42 via the nearby A444 and A511, making it a strong choice for commuters. Castle Gresley and the surrounding area offer a range of everyday amenities including shops, schooling and healthcare facilities, while nearby Swadlincote provides a wider selection of supermarkets, restaurants, cafés, cinema and leisure facilities. The surrounding National Forest area also offers excellent walking and outdoor recreation opportunities.

This is a smart, move-in-ready home with a practical layout, attractive outside space and the added benefit of no upward chain.



Open House Burton & Swadlincote

